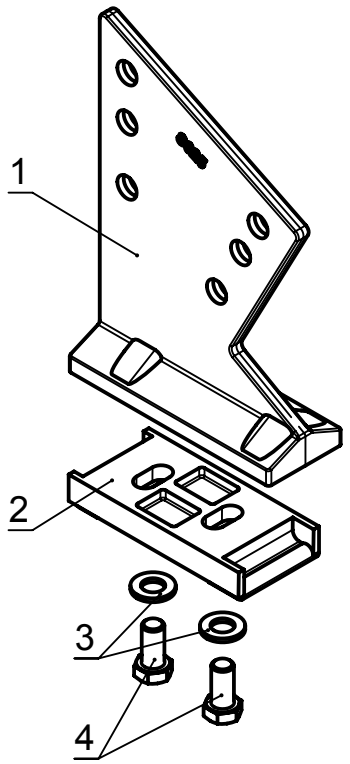
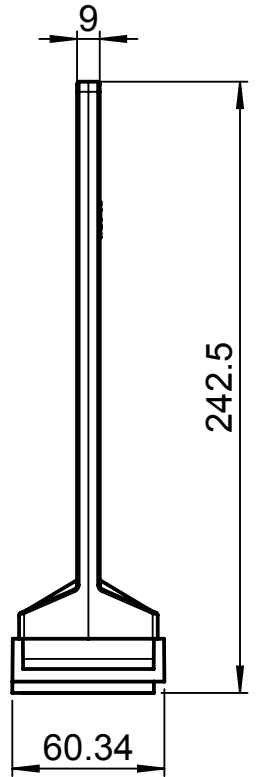
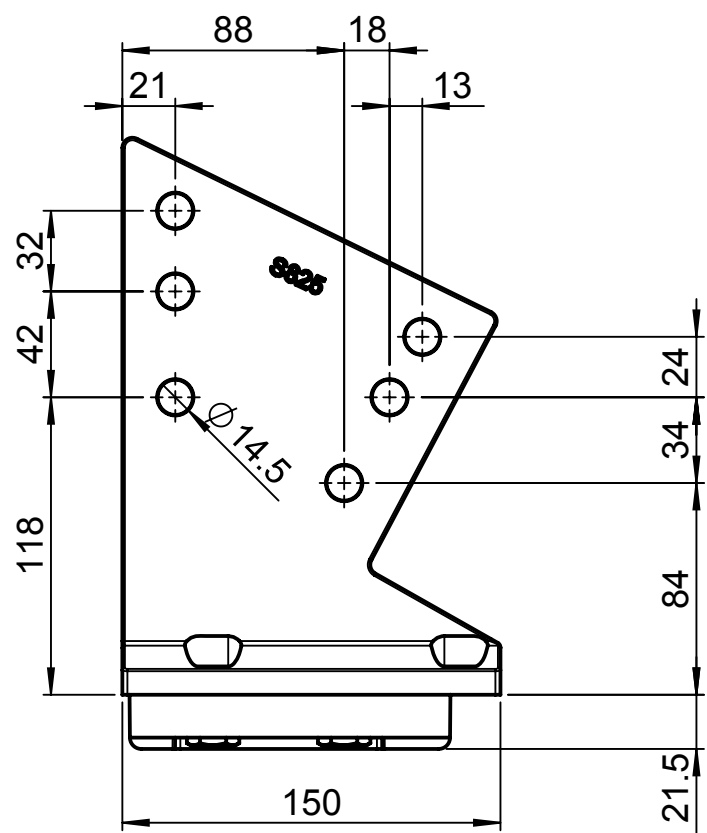
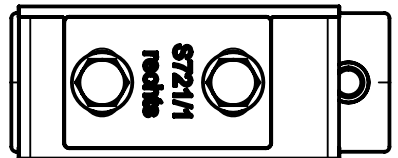


We reserve all rights in this document and the information contained therein.
 Reproduction, use or disclosure to third parties without express authority is strictly forbidden.
 © 2007 Stobag, CH-5630 Muri, Switzerland
 Produced using Solid Works


Alle Masse in millimeter
 Oberflächen-Rauheit gemäss DIN ISO 1302
 ISO 2768-mK-E
 Allgemeintoleranzen für maschinell bearbeitete Teile:
 Längen- und Winkelmasse

Pos.	Menge	Beschreibung	Material	S-Nr.	Art.-Nr.	CAD-Nr.
1	1	Dachsparrenlager S825		S825	(006250)	4527
2	1	Wandkonsole S721/1 rechts	GB-ALSi13	S721/1R	(008893)	3539
3	2	Unterlagscheibe DIN 125 - A 13	A2	-	002957	-
4	2	6kt-Schraube ISO 4017 - M12 x 25	A2-70	-	005103	-



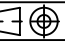
Gewicht: 1190.53g
für Extrusionsprofile g/m

Gezeichnet: ISB 01.12.2005
 Ersetzt: -
 Ersetzt durch: -



Schweizer Qualität - Swiss quality

Stobag-Nr.: S725
 Projekt-Nr.: -
 Stobag Artikel-Nr./Beschreibung
(070561)
 Dachsparrenlager S725
 Rafter bracket S725
 Casabox S7130

Seite	Seiten	Format	Masstab
2	3	A4	1:3
Material: -			Rev. 
AA-Nr.: CAD-Nr.			
6861-2			