



# UNIVERSAL US39 10

## Vertical awning

### US39 10



	min. 40 cm max. 450 cm		min. 40 cm max. 300/400 cm*
--	---------------------------	--	--------------------------------

- \* 300 cm: with stainless steel tension wires  
with stainless steel rods
- 400 cm: with aluminium guides

### Description

Vertical awning in round box – Ø 112mm, with operating handle. Fabric cover. To rise and lower the awning with self greasing worm gearbox, with free wheel gudgeon or end stop. Gearbox reduction 4:1 by break operating handle. With lead-trough and joint plate. Opening angle 45° – 90°. Break operating handle: Operating handle: connection operating handle to gearbox with rigid, positive locking galvanised steel. Operating handle rod and operating handle break made of aluminium, powder coated, corrosion protected. Fixation of the operating handle break with plastic operating handle support. Roller tube made of galvanised steel with groove for the cover fixation. Box: extruded aluminium profiles, in one piece, round. Box side caps with add-on gudgeon for the guide rails made of aluminium casting, to hold the roller tube and to fix the gearbox. Front rail made of aluminium round profile with groove for the cover and lateral guide gudgeons made of plastic. Guide rails made of extruded aluminium profiles, with slide groove for the front tube and profile groove for the fixation angle made of aluminium casting for installation on façade. All apparent screws in stainless steel.

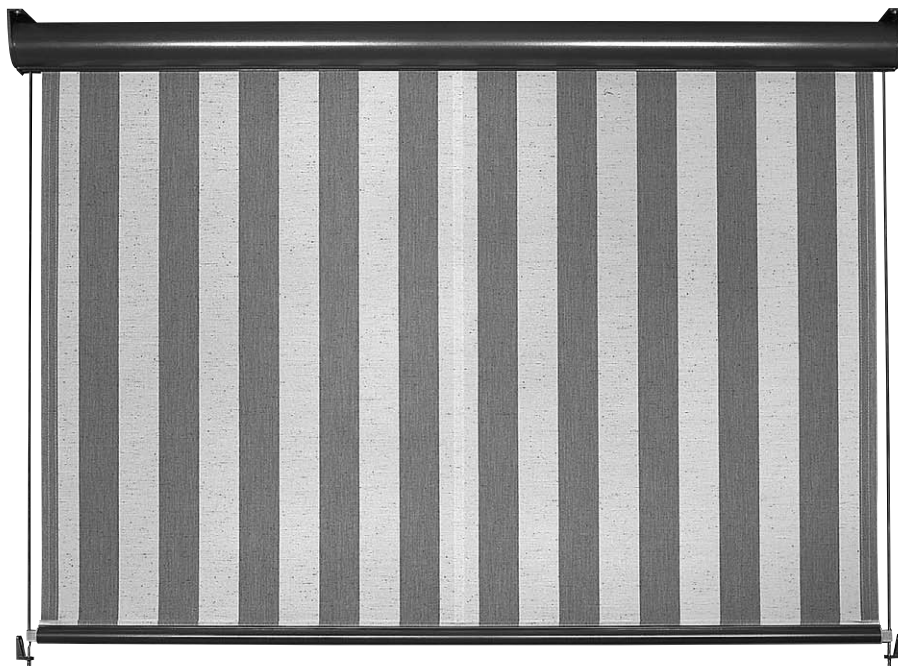
### Options

Cable guide made of 3mm stainless steel cable with pressed on thread end pieces up and down to be fixed in the side cap above and in the fixation made of aluminium casting at the bottom. Rod guide made of 8mm chrome steel with thread end pieces up and down to be fixed in the side cap above and in the fixation made of aluminium casting at the bottom. Gearbox execution with ring and detachable awning operating handle with hook. Gearbox with operating handle link and detachable break operating handle with operating handle hopper. With cast aluminium floor fixing brackets at the bottom.

**Option electric drive:** Tubular AC motor 230V/50Hz with friction brake and electronic end stop. Thermal protection. Protection class IP54 (splash water), with 50 – 150cm 4-pole connection cable. Operating handle powder coated matching the standard colours, with hook and plastic handle.

### METHOD OF DELIVERY

Box with roller tube and front rail, assembled, with cover. Lateral guide rails shortened, without fixation material.



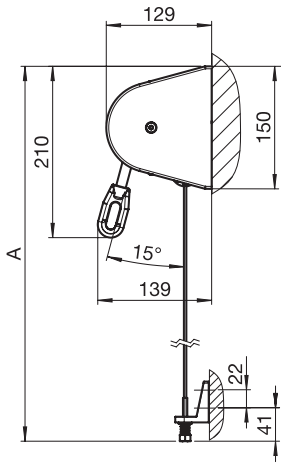


# UNIVERSAL US3910

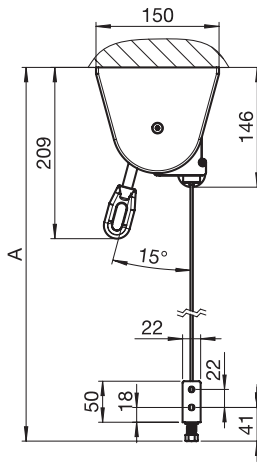
Vertical awning

## US3910/1

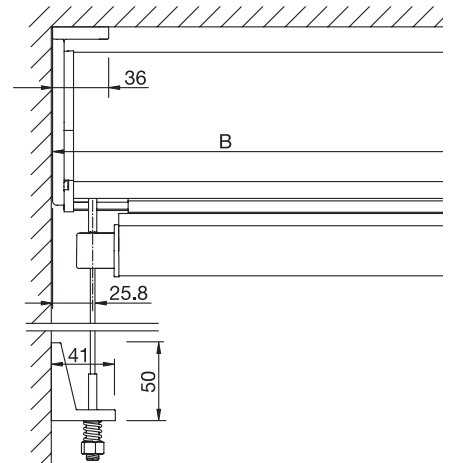
with cable guides



Wall fixing



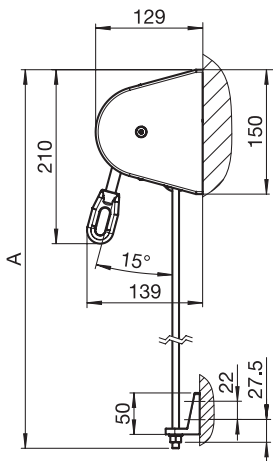
Soffit installation



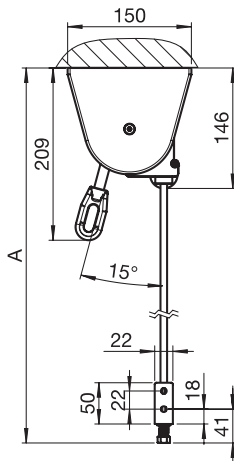
Installation drawing

## US3910/2

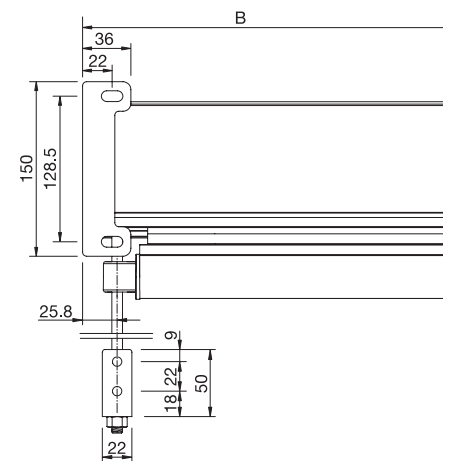
with steel rod guides



Wall fixing



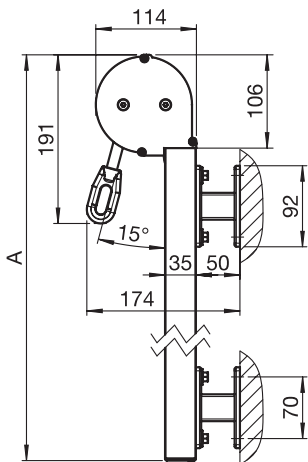
Soffit installation



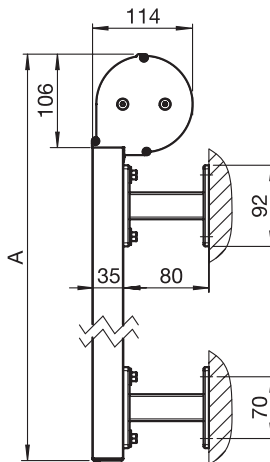
Installation drawing

## US3910/3

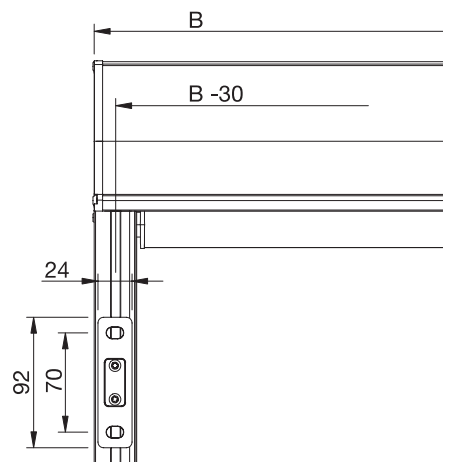
with aluminium guides



Cover rolls-up inside



Cover rolls-up outside



Installation drawing

A = Total height

B = Total width