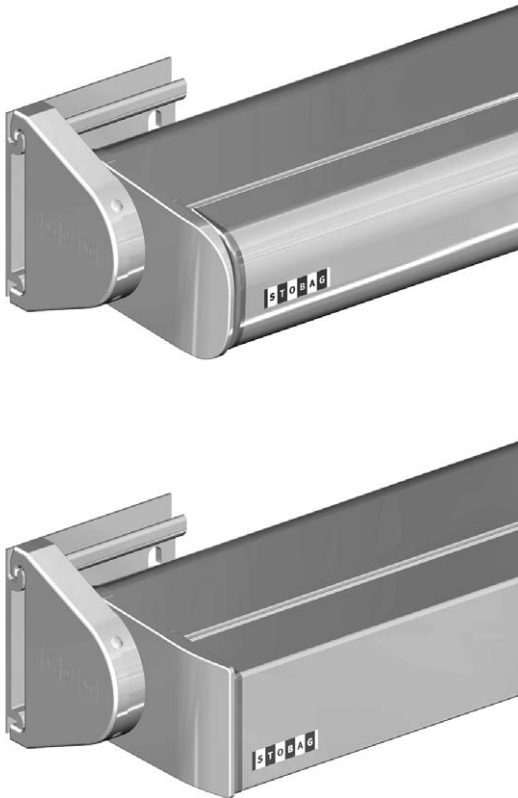




# TENDABOX BX3000

Cassette awning with folding arms

## BX3000



	min. 195 cm max. 650 cm		min. 150 cm max. 350 cm
--	----------------------------	--	----------------------------

	0° – 85° Wall fixing
	0° – 85° Top fixing
	0° – 85° Rafter installation

### Minimal with for a given projection

Projection	minimal width	
	S534 arms	BX330 arms
150cm	195	180
<b>200cm</b>	<b>255</b>	<b>280</b>
250cm	305	330
<b>300cm</b>	<b>365</b>	<b>380</b>
350cm	415	430

## Description

One-piece U-shaped protective cover (Dimension 179 x 145 mm), as from 500 cm total width protective cover inner reinforcement (Dimension 179 x 145 mm), of extruded aluminium profile as support element of structure with a groove at the upper end of profile for inserting sealing brush. Side cover as cassette end for accepting fabric roller shaft  $\varnothing$  78 or  $\varnothing$  85 of galvanised steel and for securing folding arms. Securing flange (on side cover) with hooks for hanging the awning on the brackets used for wall or ceiling installation. Securing flange, side cover, bracket are all made of aluminium casting alloy. Awning is extended and retracted manually via a bevel gearbox with integrated end stop and freewheel operating handle ring, speed reduction 4.5:1. The bevel gearbox is operated via a removable crank shaft of powder-coated metal in white, grey or brown with hook and plastic handle. Up to 600 cm total width (folding arm S534), as from 600 cm total width motor drive (folding arm BX330). Front rail of extruded aluminium in rounded (Dimension 98 x 131 mm) or square (Dimension 98 x 131 mm) shape with matching plastic end caps. Folding arms with inverse incline of aluminium extruded profiles and precision parts of aluminium cast alloy, internal tension springs and double stainless steel cables and cable protector over the middle joint. The angle of shade is infinitely adjustable via internal hexagon bolt in securing flange from 0° – 85° for wall installation as well as for ceiling installation. All aluminium profiles are chromate coated. The aluminium profiles and aluminium cast parts are powder-coated in facade quality. All visible screws are stainless steel. The cover with a spin-dyed acrylic cloth (price category 1), colour consistent, very high UV protection, good tensile strength, water and dirt resistant is from the STOBAG collection.

### Options:

#### Brackets

In order to cater for different installation conditions such as poor brickwork, wood/steel structures, rafters etc., we offer a range of different types of brackets.

#### Wall junction profile

Aluminium extruded wall junction profile incl. side cover of aluminium sheet is attached to the facade to prevent rainwater dropping between the facade and the awning.

#### Roller shaft screen

Extruded aluminium profile as roller shaft screen.

#### Electric drive

With an electronic limit switch: Tubular AC motor 230 V, 50 Hz or 120 V, 60 Hz (according to the country) with electromechanical brakes and electronic end stop. Thermal protection, protection class IP54 (spray water), with 50 – 150 cm connection cable.

Remote control motor with an electronic limit switch: Tubular AC motor 230 V, 50 Hz or 120 V, 60 Hz (according to the country) with electromechanical brakes and electronic end stop. Integrated radio receiver, thermal protection, protection class IP54 (spray water), with 50 – 150 cm connection cable.

#### Cover / manufacture technology

Awning covers of polyester, acrylic etc. and various assembly technologies such as gluing, TENARA stitching etc. as per STOBAG collection ( collection index).

## METHOD OF DELIVERY

Awnings completely assembled, with cover

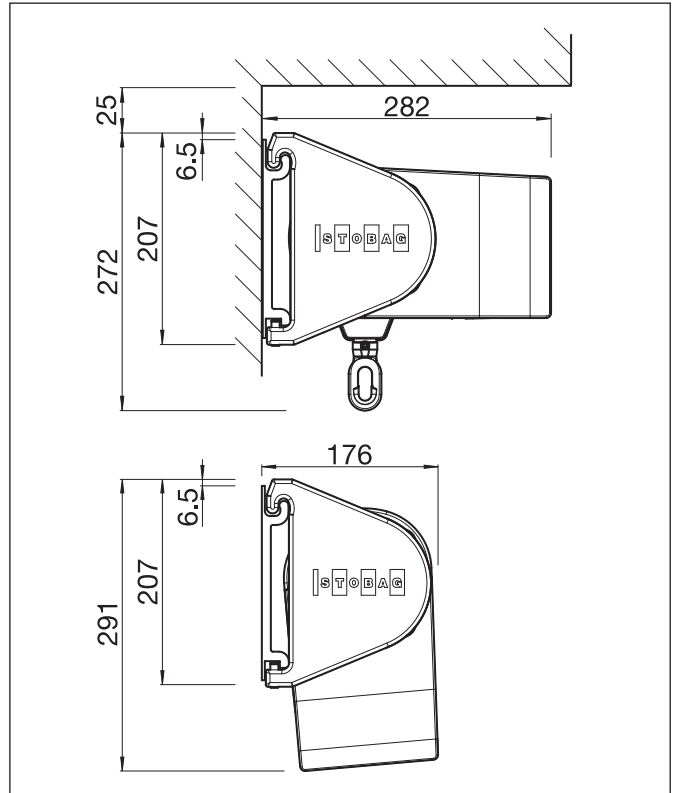
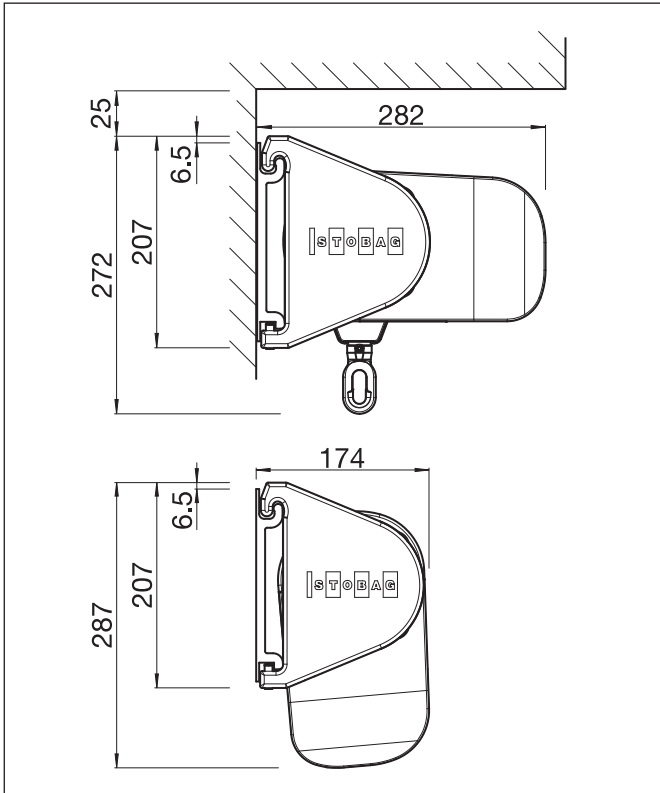


# TENDABOX BX3000

Cassette awning with folding arms

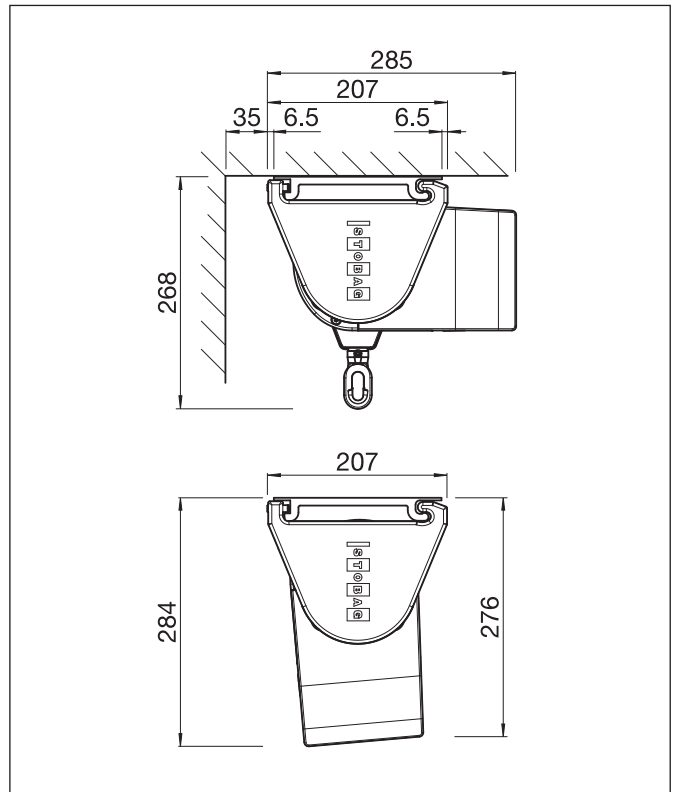
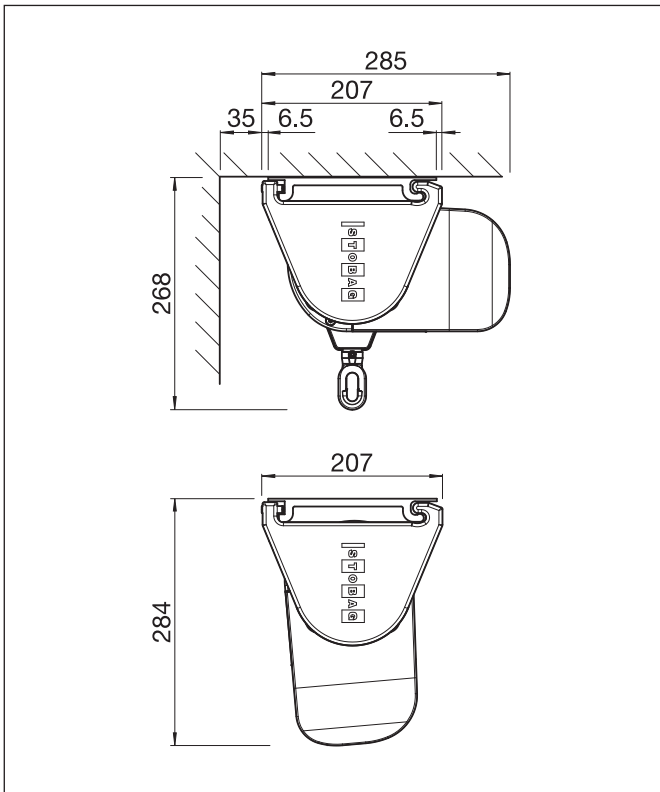
## BX3000

## Wall fixing



## BX3000

## Top fixing





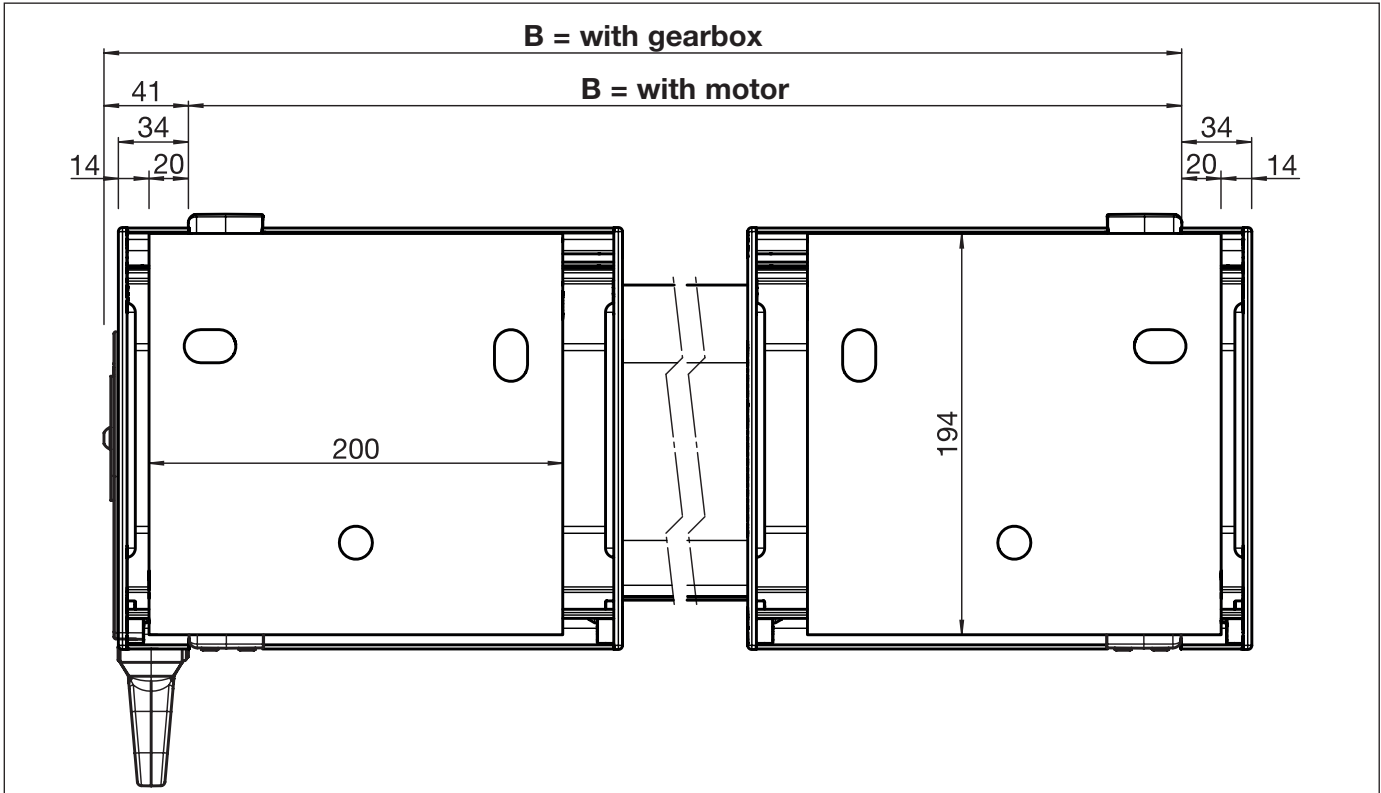


# TENDABOX BX3000

Cassette awning with folding arms

**BX3000**

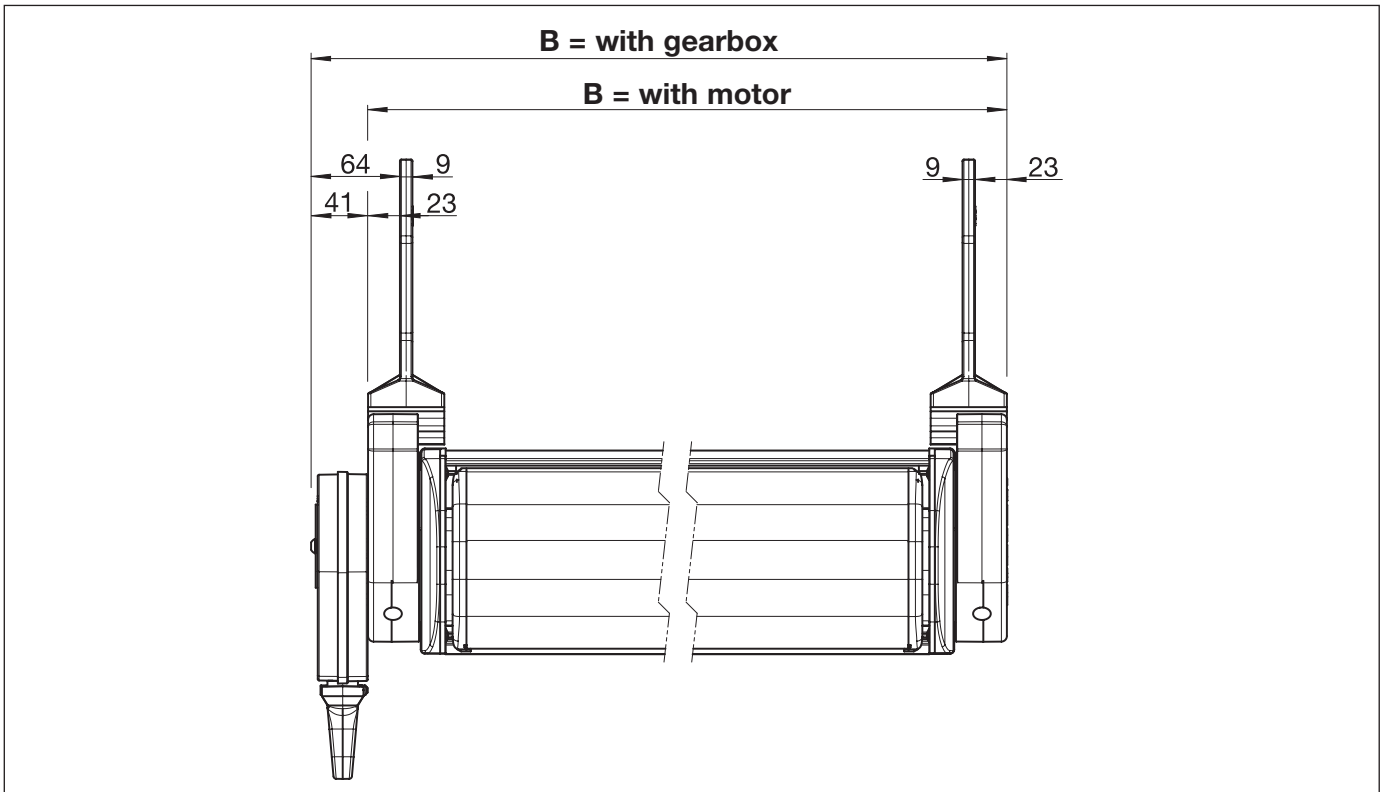
**Installation drawing: with bracket cover**



B = total width

**BX3000**

**Installation drawing: rafter**



B = total width