



# TARGA-PLUS PS6100

## Conservatory awning with motor

### PS6100



	min. 85 cm **max. 600/700 cm		*min. 185 cm ***max. 600/700 cm
--	---------------------------------	--	------------------------------------

- \* min. 125cm (A) + 60cm (P1) = 185cm
- min. 205cm (A) + 100cm (P2) = 305cm
- min. 243cm (A) + 140cm (P3) = 383cm

\*\* with 2 guide rails (max. 36m<sup>2</sup>)

\*\*\* for a width greter than 600 cm

3 guide rails are required (max. 49m<sup>2</sup>) two covers

### Description

Awning for conservatories with motor drive. Fabric cover. Retraction and extension of the awning with tubular AC motor 230V/50Hz with friction brake and electronic end stop. Thermal protection. Protection class IP54 (splash water), with 150cm 4-pole connection cable. Top box: Extruded aluminium profile, in one piece, rounded execution, as a construction support element with profile groove for the guide rail fixations. Side cap made of aluminium casting to hold the roller bearing or the motor bearing. Roller tube made of galvanised steel with groove for the cover. Front profile made of extruded aluminium chamber profile with groove for the cover and the runner for the push and pull mechanism. With rolled in front profile, the top box is completely closed. Guide rails made of extruded aluminium profiles, with an additional extension of max. 140 cm beyond the conservatory roof line, locked when retracted. Guide rails with grooves for the PVC glider, hollow chamber for the integrated gas filled cylinder and groove for the fixation support. The installation with a max. lateral overhang of 100 cm (left and right each) can be adjusted according to the frame work. Guide rail fixation supports made of aluminium casting. All visible screws in stainless steel.

Awnings with an extension of more than 300 cm are fitted with one guiding roller profile and more than 500 cm with two, including support sets for guiding roller profiles for the cover supports. Guiding roller profile is round extruded aluminium, guide rail fixings are cast aluminium alloy.

#### Option:

Motor drive E radio

#### Option:

with 3 guides up to 700cm total width / 700cm extension (maximum 49m<sup>2</sup>)

### METHOD OF DELIVERY

Awning completely assembled in top box, with cover. Guide rails separately.



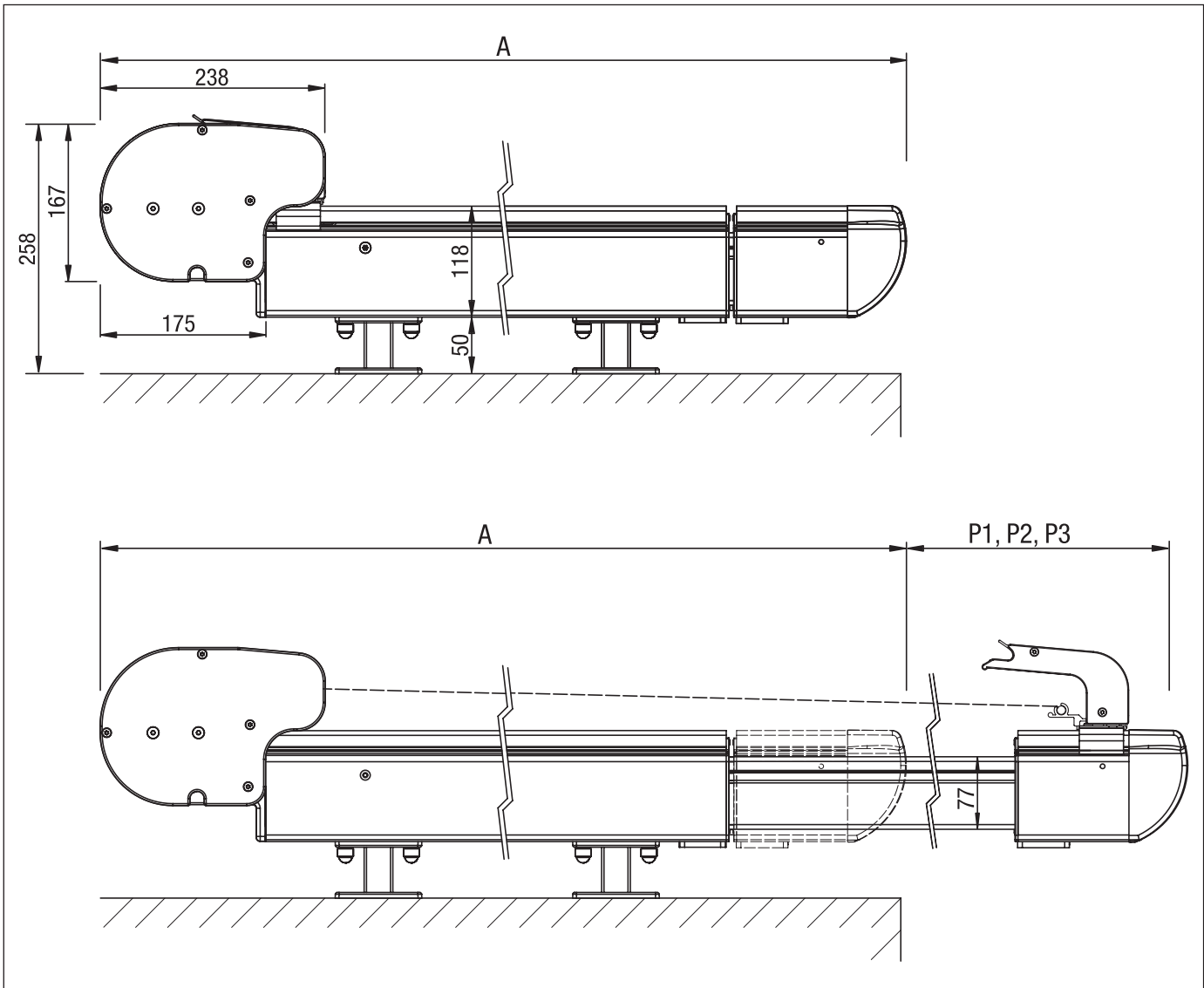


# TARGA-PLUS PS6100

Conservatory awning with motor

PS6100

Conservatory installation



**A** = projection (fix)

**P1** = projection Plus = 60cm

**P2** = projection Plus = 100cm

**P3** = projection Plus = 140cm

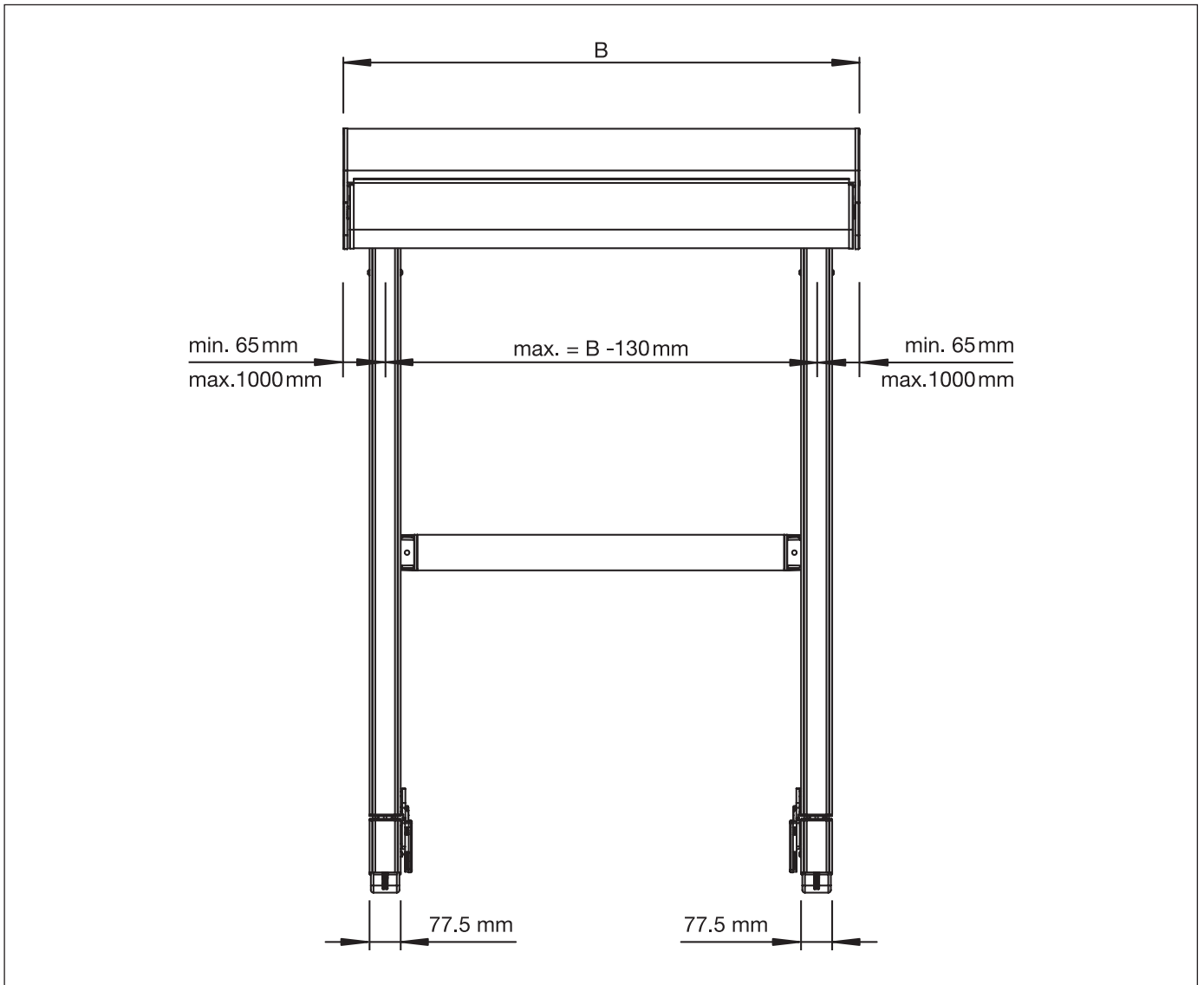


# TARGA-PLUS PS6100

Conservatory awning with motor

PS6100

Installation drawing



**B** = Total width