



SECURE FL1000

Security shutter certified to protection class ENV 1627-1630

FL1000



	min. 50 cm max. 300 cm		min. 50 cm max. 350 cm
--	---------------------------	--	---------------------------

Description

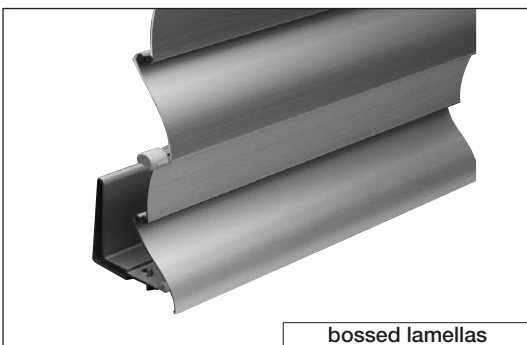
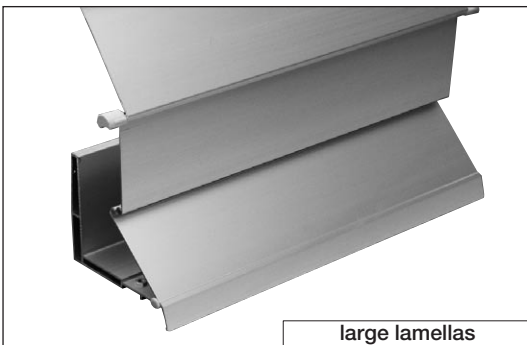
The security shutter has a firmly connected lamella armour which folds into the end rail from bottom to top, with a bevel gearbox 3,5:1 and buckle operating handle or, if more than 4m², with a motor. The top suspension profile, with adjustable height, fixes the armour in the guide rails. The end rail is connected to the drive rails with a chrome steel angle and is therefore a firm connection element. Both extruded aluminium lamellas (full profile) are connected with a hinge bar and are, due to the dented form, a strong unity. The bottom lamella has an end nose which, when closed, does not offer any surface for assaults. The drive guide is fitted with a push chain drive which stays locked in any position. The guide rail integrated in the drive rail is adjustable and holds the hinge bars with snap-on plastic gliders, thus guiding the aluminium lamella armour. The drive connection of both guide rails from left to right is done with a steel shaft and hollow shaft with spring link unit by the chain tail sheave on the upper part of the guide rail.

Option:

Gearbox execution with operating handle link and detachable buckle operating handle with operating handle funnel.

The ES-guide rail has a hollow cavity profile in which the bevel gearbox 3,5:1 can be integrated. This execution is necessary if no gearbox niche exists.

Electric drive: AC-motor 220/230 V – with electromagnetic brake and electronic end stop, thermo protection IP54 (splash water), with cable 0.8m 4-poles feeder connection cable.



ENGINEERING DATA

Installation height EH

Total height	100	120	140	160	180	200	220	240	260	280	300
Types CB + EB	13.5	13.5	14.0	15.0	16.0	17.0	18.0	19.0	20.0	21.5	22.5
Type CM + EM	13.5	14.0	16.0	17.0	19.0	20.0	21.5	23.5	24.5	26.5	27.5
Types CS + ES	14.0	16.0	18.0	20.0	21.5	23.5	25.5	27.5	28.5	30.5	33.0
Type DB	16.0	17.0	18.0	19.0	20.0	22.0	23.0	24.0	25.0	26.5	27.5
Type DM	18.0	19.0	20.0	22.0	23.0	25.0	26.5	27.5	29.5	30.5	32.5
Type DS	19.0	21.0	23.0	24.0	26.5	28.5	29.5	31.5	33.5	35.5	37.0

TYPES

- CB gearbox execution with large lamellas
- CM gearbox execution with bossed lamellas
- CS gearbox execution with small lamellas
- DB motor drive with large lamellas
- DM motor drive with bossed lamellas
- DS motor drive with small lamellas

Large guide rails for installations without gearbox hollow cavity

EB = with large lamellas **EM** = with bossed lamellas **ES** = with small lamellas

Drive:

With gearbox and operating handle or motor

Chain wheels in both guides with ball-bearings.

Manual drive up to max. 4m², electric drive from 4m² to 10,5m²

METHOD OF DELIVERY

Safety shutter armour completely assembled. Pair of guide rails ready for installation with assembled gearbox or motor. Connection shaft, link and stop angle loose.

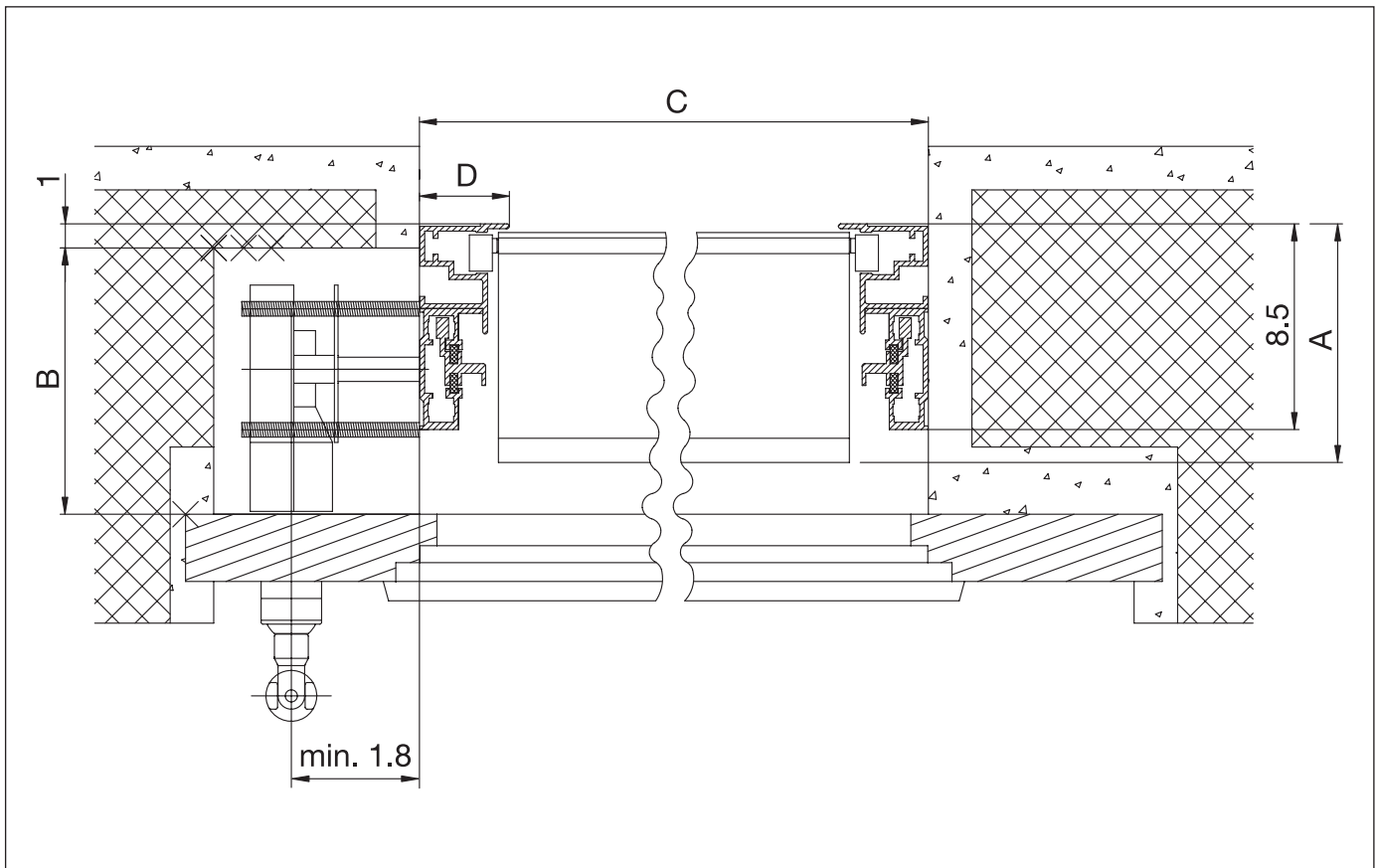


SECURE FL1000

Security shutter certified to protection class ENV 1627-1630

FL1000

Horizontal cut type type CB, CM, CS, DB, DM, DS
all sizes in cm



A	13.5 Typ CB, DB	large lamellas
	11.5 Typ CM, DM	bossed lamellas
	10.0 Typ CS, DS	small lamellas
B	13.0 Typ CB	large lamellas
	13.0 Typ CM	bossed lamellas
	13.0 Typ CS	small lamellas
C	clearance width LB	
D	adjustable from 3.7 to 4.5	

On types DB, DM (motor drive) there is no gear-box recess



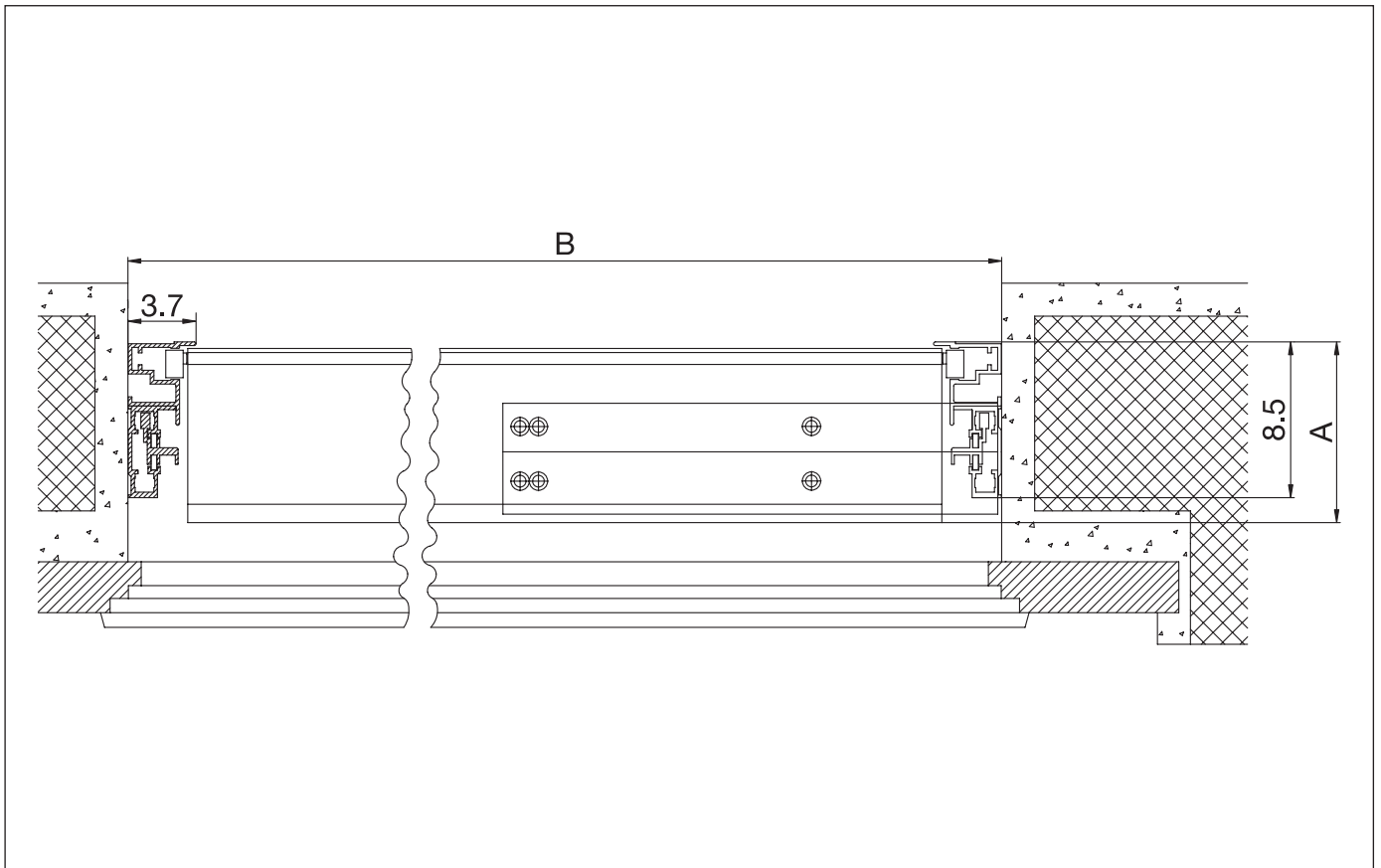
SECURE FL1000

Security shutter certified to protection class ENV 1627-1630

FL1000

Horizontal cut type DB, DM, DS

all sizes in cm



A	13.5 Typ DB	large lamellas
	11.5 Typ DM	bossed lamellas
	10.0 Typ DS	small lamellas
B	clearance width LB	



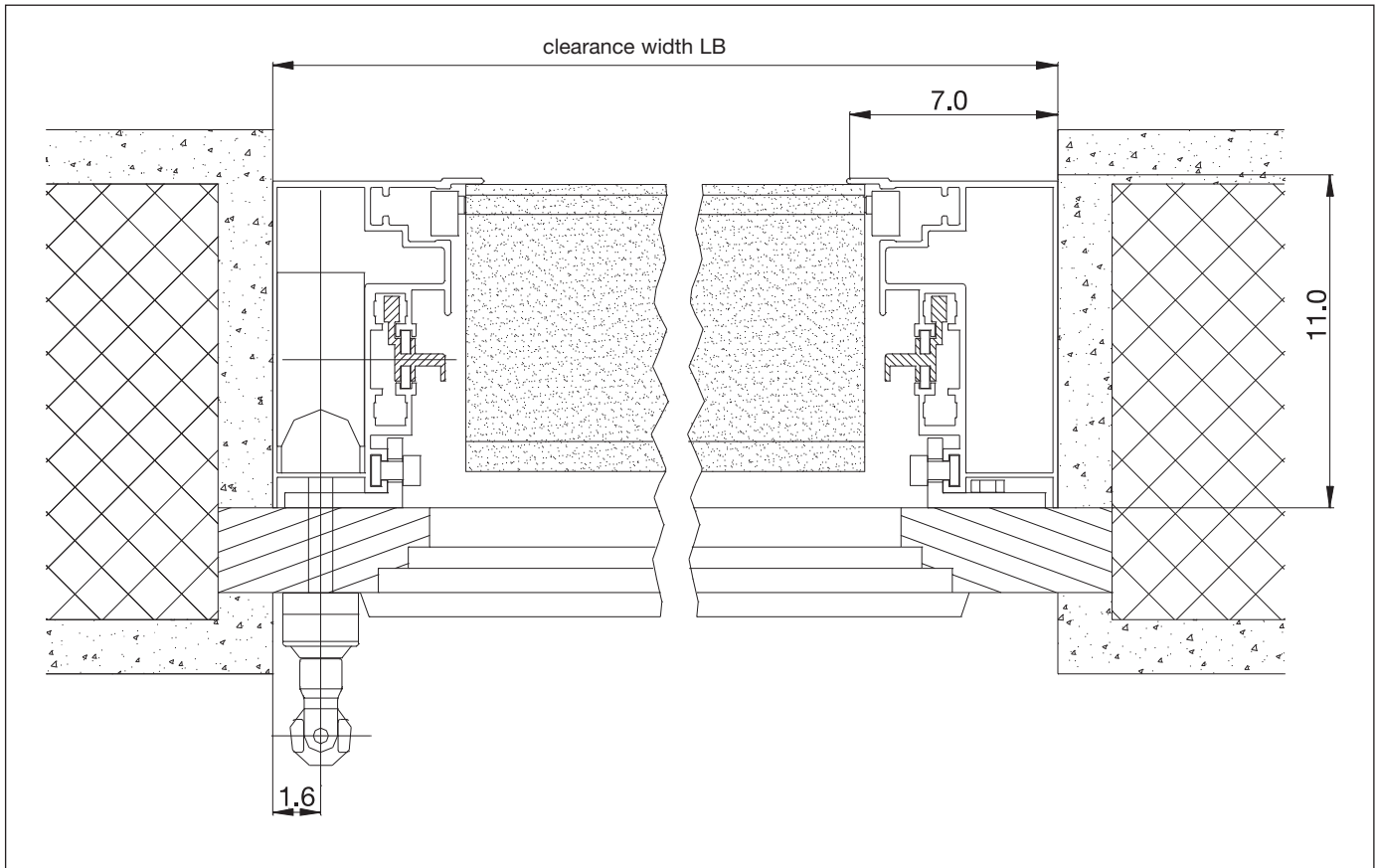
SECURE FL1000

Security shutter certified to protection class ENV 1627-1630

FL1000

Horizontal cut type ES

all sizes in cm



Wide track for installation on window frames with
no cut-out for drive



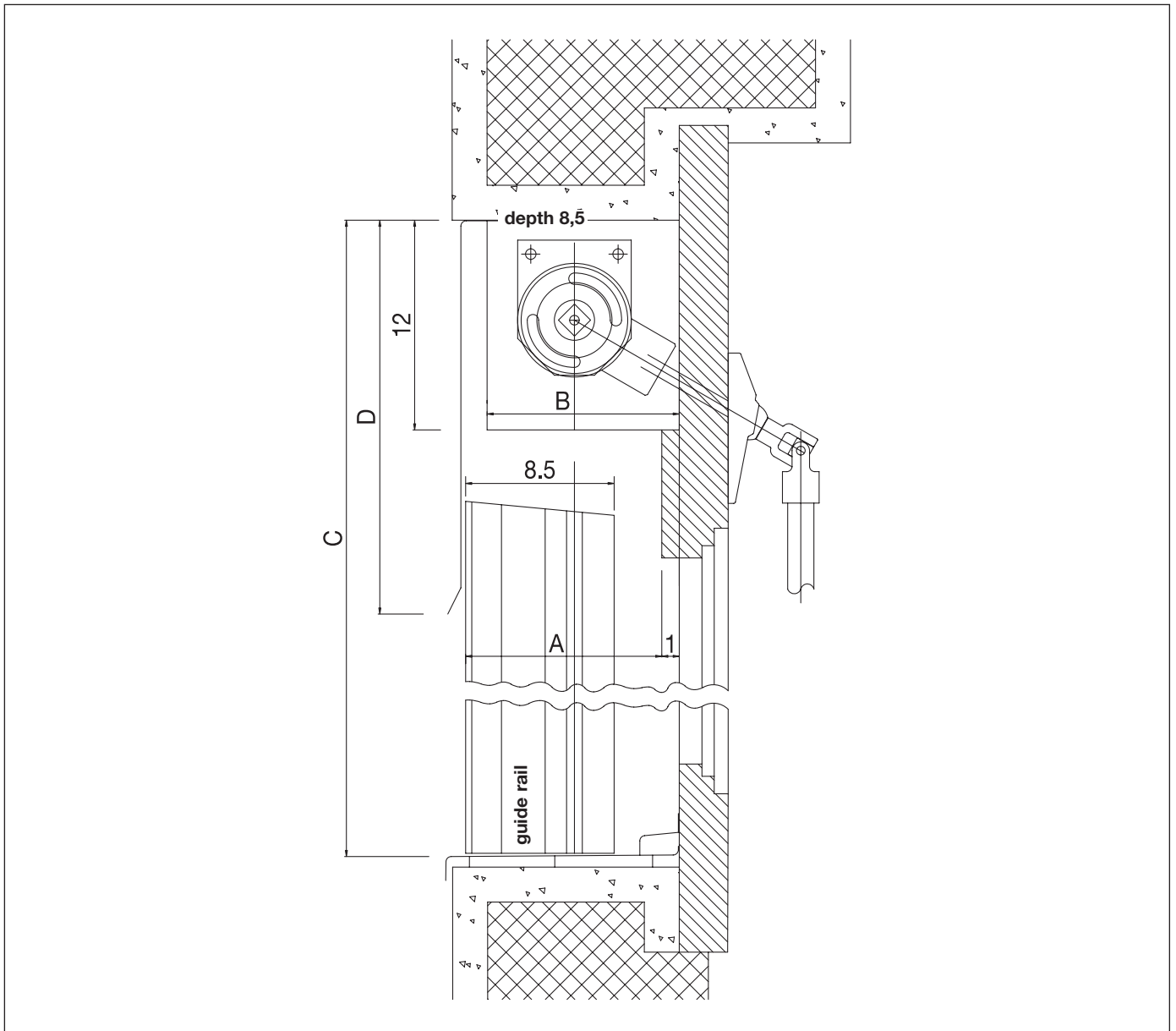
SECURE FL1000

Security shutter certified to protection class ENV 1627-1630

FL1000

Vertical cut type CB, CM, CS, DB, DM, DS

all sizes in cm



A	13.5 Typ CB, DB	large lamellas
	11.5 Typ CM, DM	bossed lamellas
	10.0 Typ CS, DS	small lamellas
B	13.0 Typ CB	large lamellas
	13.0 Typ CM	bossed lamellas
	13.0 Typ CS	small lamellas
C	total height TH	
D	aperture height or installation height	

On types DB, DM, DS (motor drive) there is no gearbox recess.