



# OMBRAMOBIL OS4000

Mobile, double-sides folding-arm awning

## OS4000



OS4000 awning closed



OS4000 with transverse foot OS412



OS4000 floor sleeve OS315

	min. 315 cm max. 555 cm		min. 300 cm max. 450 cm
--	----------------------------	--	----------------------------

	10-20°
--	--------

## Description

Free-standing double-sided folding-arm awning with crank drive. Tensioning by awning cover. Extension and retraction of the awning by detachable crank and bevel gearbox. Crank made of metal with a hook and plastic-covered grip. The external surface is powder-coated to match standard colours. The full-length, rounded top box in extruded aluminium profile supports the construction and also protects the arms and cover against the weather. The side elements are cast aluminium alloy and fitted with fixing points to take the cover, gearbox and folding arms. A connecting profile is fitted to the outside of each side element. The cast aluminium alloy side caps close off the top box. The awning is tensioned by a roller tube. The roller tube contains an auxiliary spring to make rolling the cover easy. The folding arms are made of extruded aluminium profiles with cast aluminium precision joints. Tensioning springs and double stainless steel cables are built into the arms. The middle joint is fitted with a cable protection. The incline can be adjusted from 10° up to 20° by the swivelling section of the folding arms. The front edge of the awning is formed by the front rail of extruded aluminium chamber profile with fitted plastic end caps. The front rail also has a rain gutter and grooves for the cover and valance. The supports are connected to the awning by a connecting profile. The aluminium supports are rounded and measure 82 x 50 mm. Transverse feet are used for floor-mounting, made up of connector and foot plates of cast aluminium alloy. As a variation, the awning can also be installed with floor sleeves.

## Options

Electric drive: AC motor 230V/50Hz or with friction brake, electronic end stop switch and thermo-protection. IP54 (spray water) protection with 50-150cm 4-pole connection.

## METHOD OF DELIVERY

Awnings completely assembled, with cover.  
Supports not mounted.

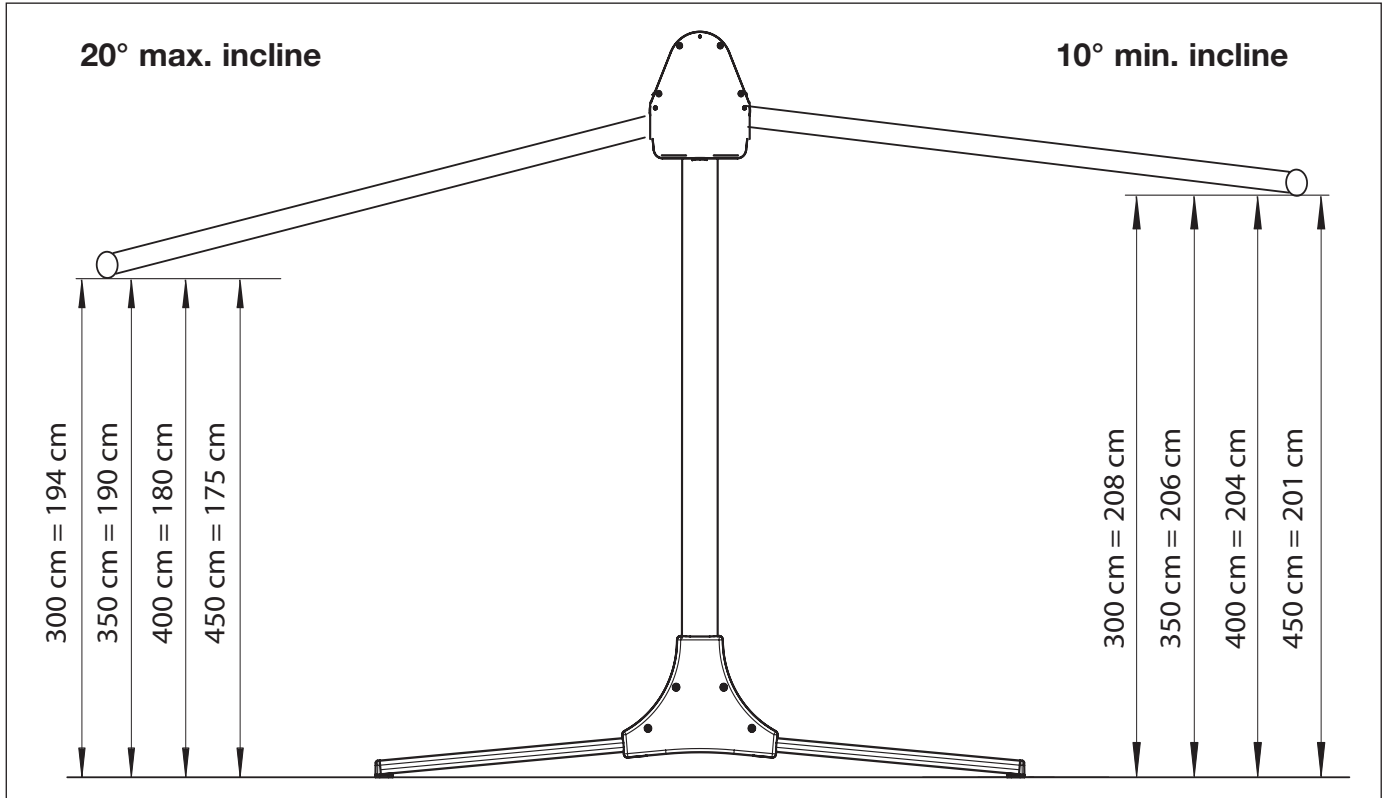


# OMBRAMOBIL OS4000

Mobile, double-sides folding-arm awning

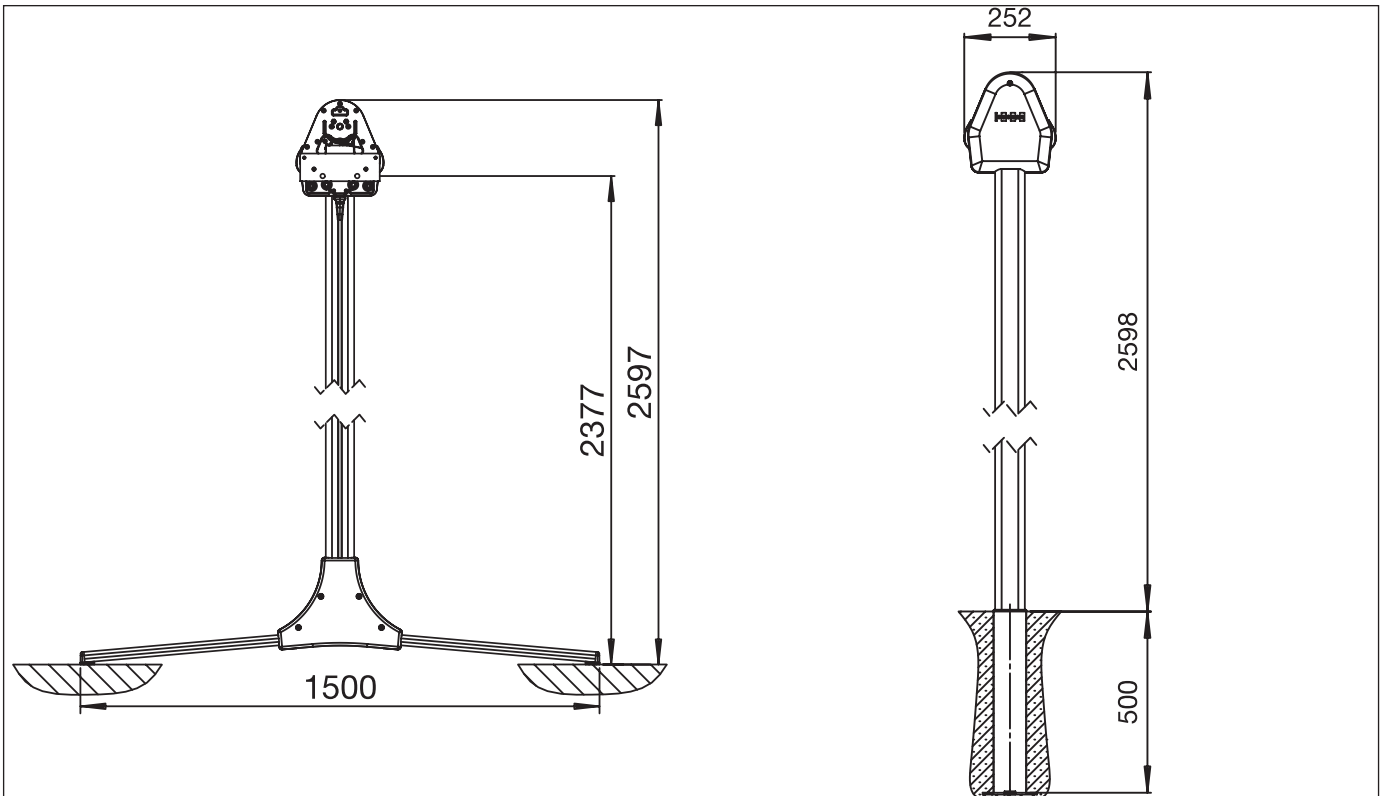
OS4000

Technical drawing



Version with transverse foot OS412

Version with floor sleeves OS315



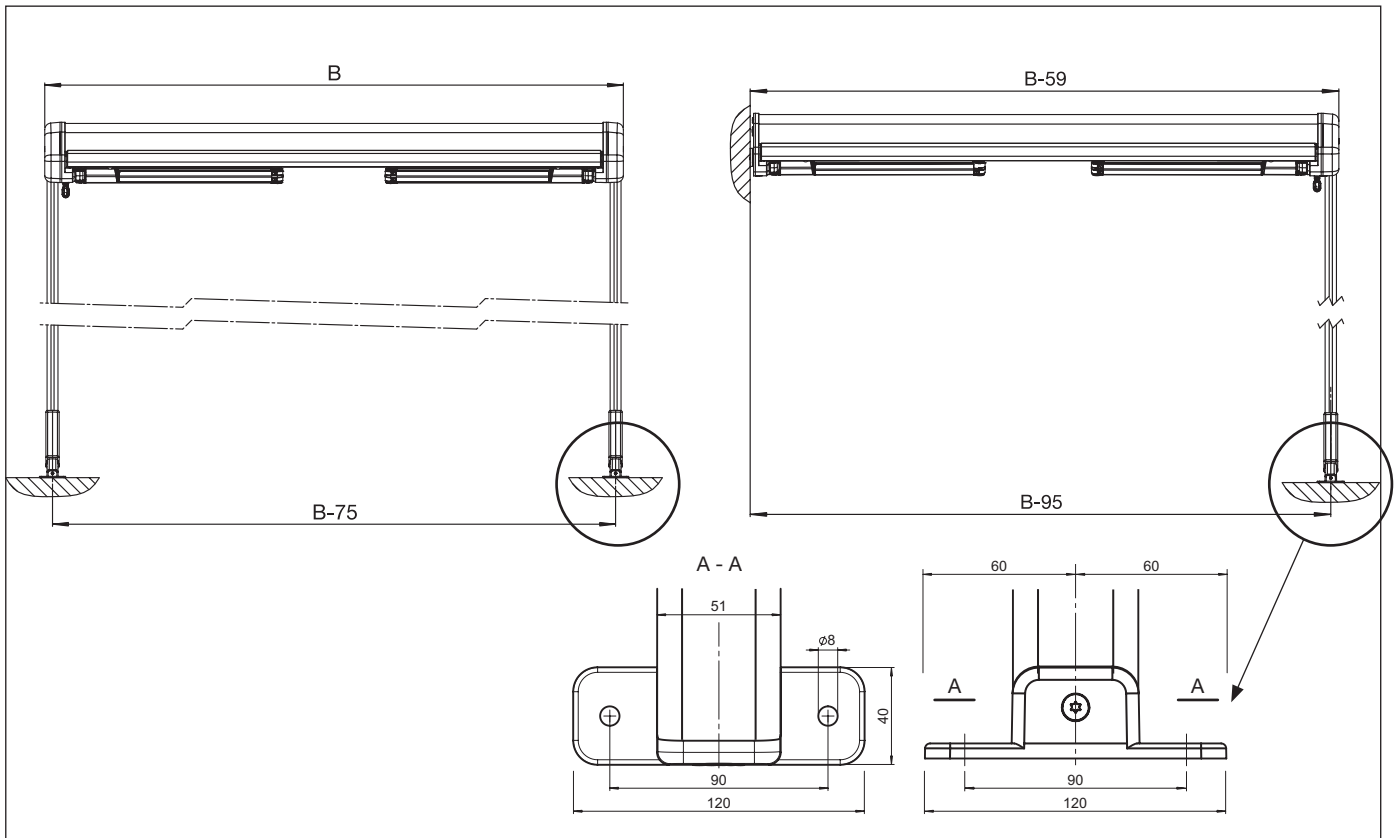


# OMBRAMOBIL OS4000

Mobile, double-sides folding-arm awning

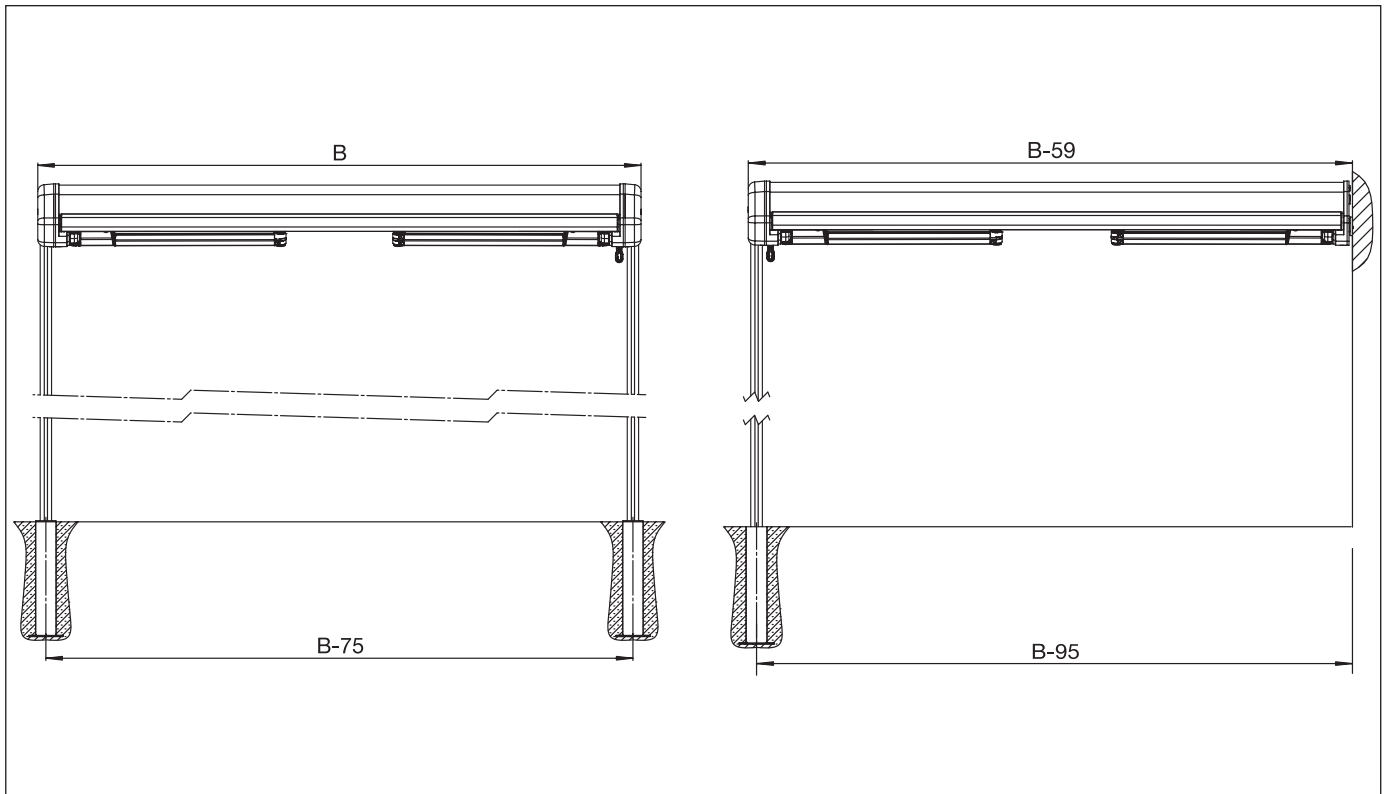
## Installation plan with transv. foot OS412

## with transverse foot and wall fixation



## Installation plan with floor sleeve OS315

## with floor sleeve and wall fixation



B = Total width