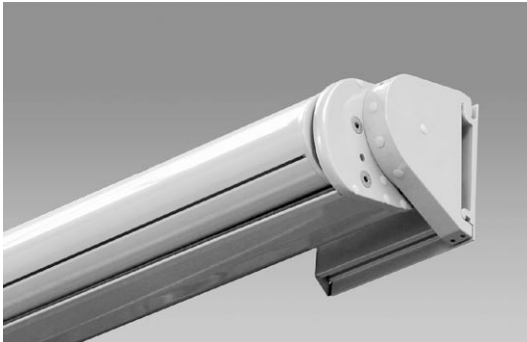





# MESABOX S9170

Box awning with telescopic arms and an electric motor

## S9170



	min. 350 cm max. 700 cm		min. 250 cm max. 400 cm
---	----------------------------	---	----------------------------

	0° - 70° Wall fixing 0° - 90° Top fixing
---	---

### Minimal width for a given projection

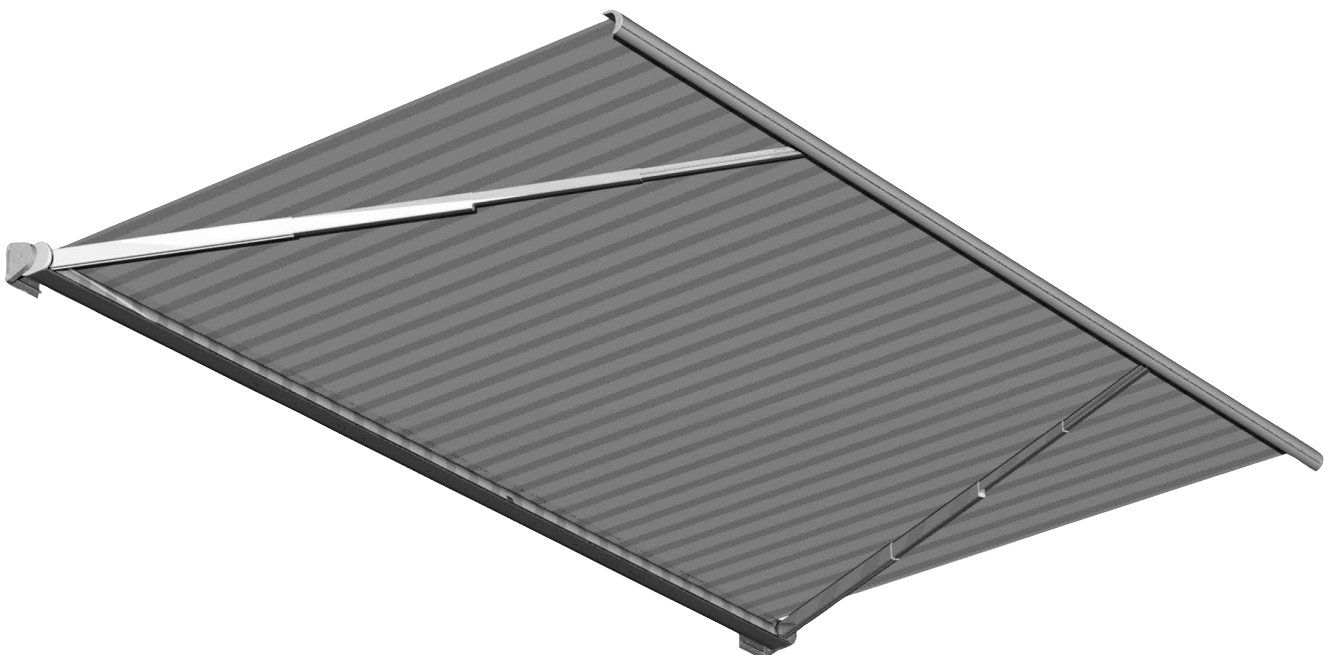
Projection	Minimal width
250cm	350cm
<b>300cm</b>	<b>400cm</b>
350cm	450cm
<b>400cm</b>	<b>485cm</b>

## Description

Large area box awning with motor drive and patented, four-section Stoboscope arms. Extension and retraction of the awning with AC motor 220/230 V, with friction brake, electronic end stop switch and thermo-protection IP54 (spray water) protection with 50-150cm 4-pole connection. Tensioning through awning cover. Roller tube in galvanised steel with groove for cover. Box: extruded aluminium profile. Two-part in U-shape as construction bearing element. With grooves in upper and lower ends of the profile for insertion of band brush and further grooves on lower part of the box for the arm auxiliary springs. Side caps in cast aluminium alloy to close the box constructed to take the roller tube bearing and for fitting the Stoboscope arms. Swivel flanges can be set for wall or ceiling fix. Easy installation with clip-in hooks and Allen screws. The inclination of the awning can be adjusted continuously using the swivel plates on each side. The end rail has an attractive shape and closes perfectly into the box. The end rail is an extruded aluminium chamber profile with grooves for the cover and fixing the Stoboscope arms. The end rail has a further groove on its outside to take the valance. Side caps in cast aluminium alloy. The box is closed by the retracted end rail. The fixing bracket is an extruded aluminium chamber profile for single or series installation with appropriate bracket covers.

### METHOD OF DELIVERY

Awning fully assembled with cover.  
If required, the Stoboscope arms can be supplied loose.



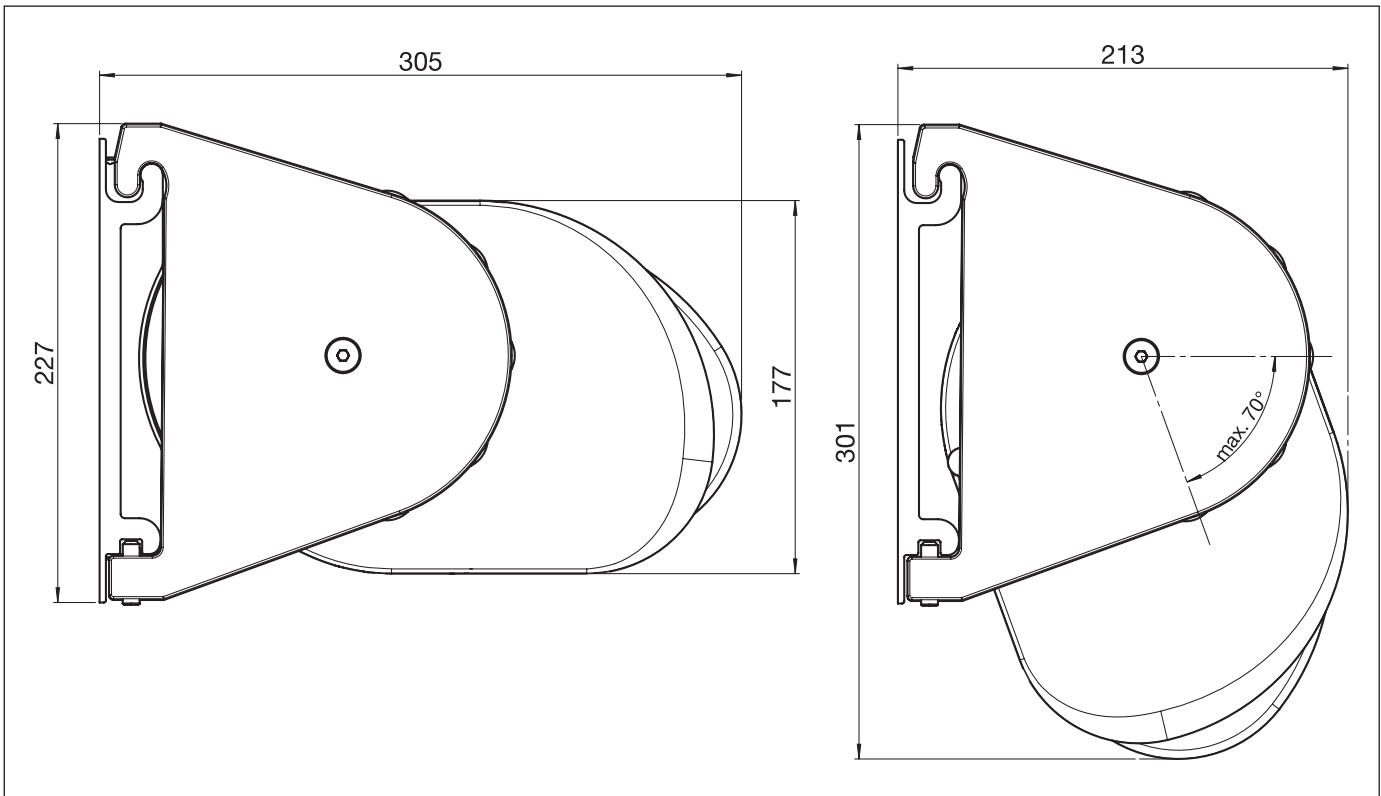


# MESABOX S9170

Box awning with telescopic arms and an electric motor

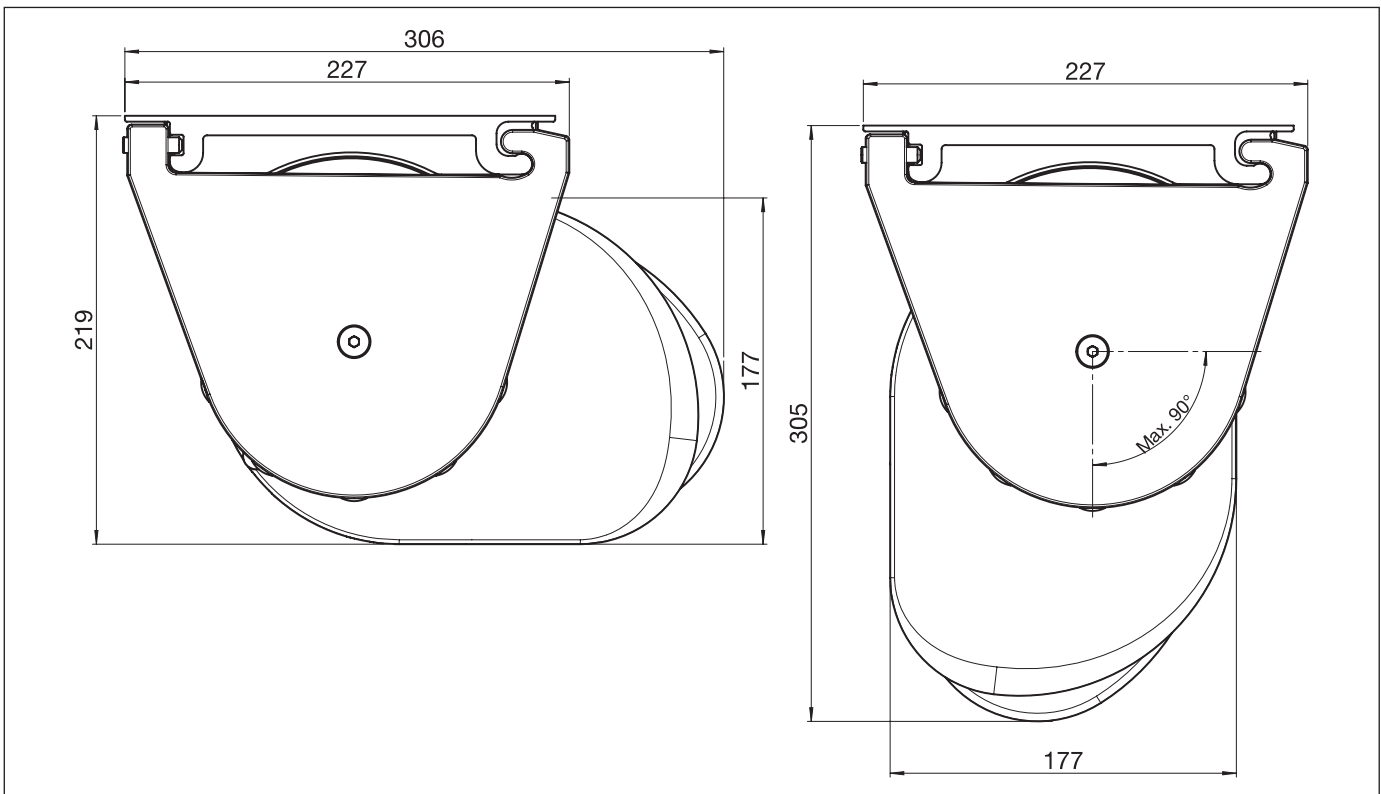
## S9170

## Wall fixing



## S9170

## Top fixing



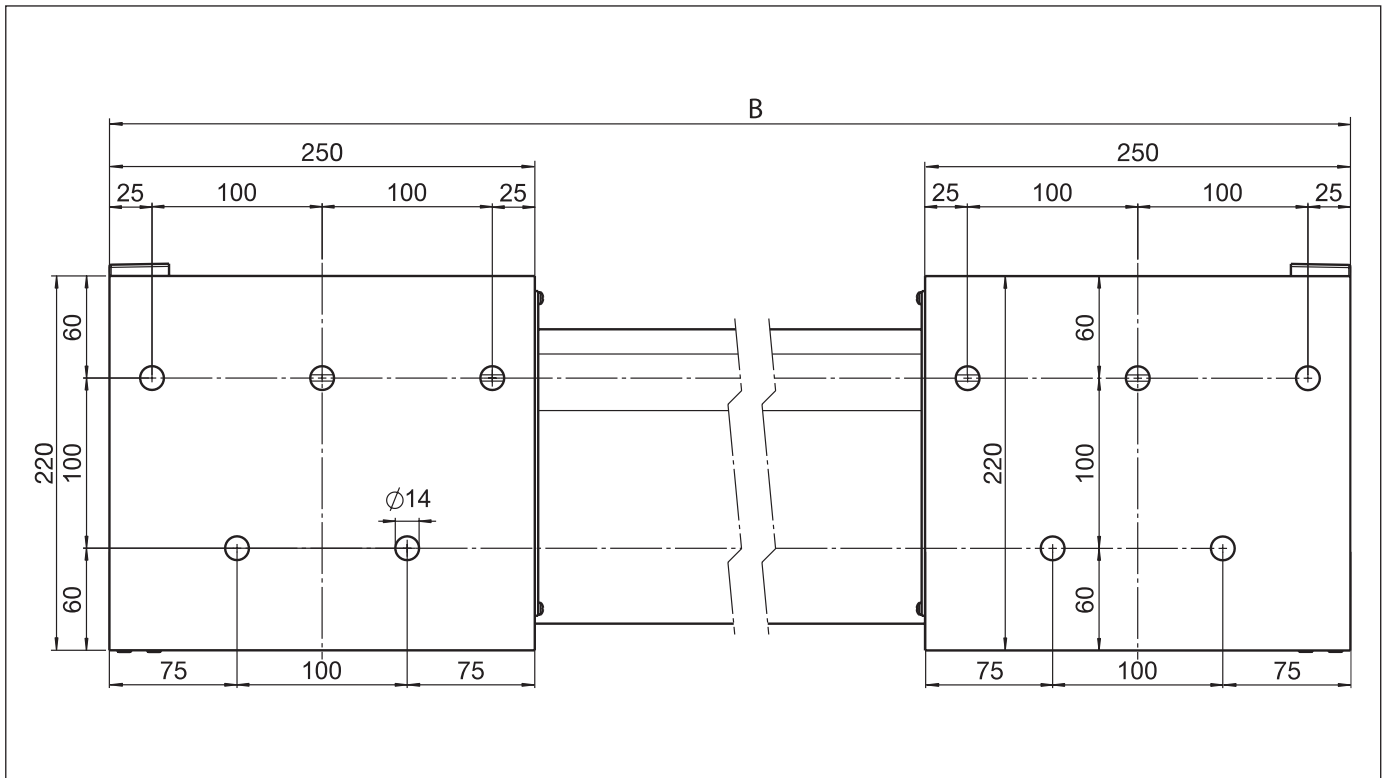


# MESABOX S9170

Box awning with telescopic arms and an electric motor

S9170

Installation drawing



B = Total width