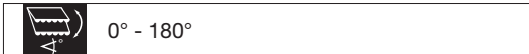
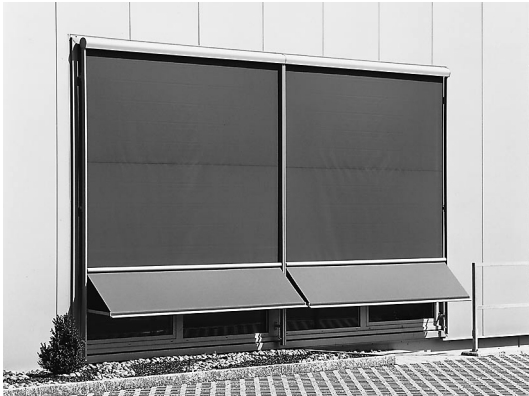




METRO-LIGHT FS5610

Projection awning up to 180° with wind latch

FS5610



Description

Projection awning with round box Ø 105mm. Fabric cover. To rise and lower the awning with self greasing worm gearbox, with free wheel gudgeon or end stop. Gearbox reduction 4:1 by break operating handle. With lead-trough and joint plate. Opening angle 45°-90°. Break operating handle: Operating handle: connection operating handle to gearbox with rigid, positive locking galvanised steel. Operating handle rod and operating handle break made of aluminium, powder coated. Fixation of the operating handle break with plastic operating handle support. Round box: extruded aluminium profiles, in one piece. Box side caps with add-on gudgeon for the guide rails made of aluminium casting, powder coated, to hold the gearbox bearing and bearing opposite side. Roller tube made of galvanised steel with groove for the cover fixation. Guiding roller tube made of extruded aluminium round profile with plastic roll gliders. Front rail made of aluminium chamber profile with groove for the cover and fixation chamber for the projection arms, including side caps. Box closed with retracted front rail. Projection arms made of aluminium casting. Projection 45cm with joints made of aluminium casting and integrated torsion springs for a projection angle of 180°. Integrated wind security with automatic lock on drop arm projection of 180°. Guide rails made of extruded aluminium profiles, with slide groove for the front tube, continuously adjustable arm stops and groove for the fixations. Fixations made of aluminium casting, resp. extruded aluminium profiles for installation on façade. All apparent screws in stainless steel.

Options

Gearbox with ring and detachable operating handle with hook.

Gearbox with operating handle link and detachable operating handle break with operating handle hopper.

Electric drive: Tubular AC motor 230V/50Hz ecoMot, powerFlex, powerFlex-radio with friction brake and electronic end stop. Thermal protection. Protection class IP54 (splash water), with 50-150cm 4-pole connection cable.

METHOD OF DELIVERY

Awnings fully assembled. With cover, guide rails with projection arms and guiding roller tube separately.



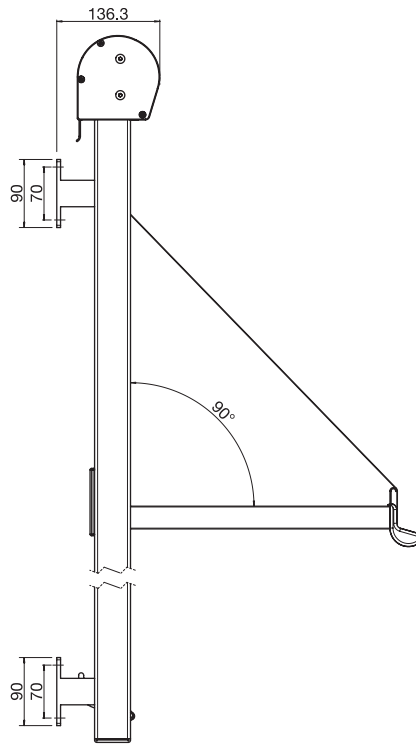


METRO-LIGHT FS5610

Projection awning up to 180° with wind latch

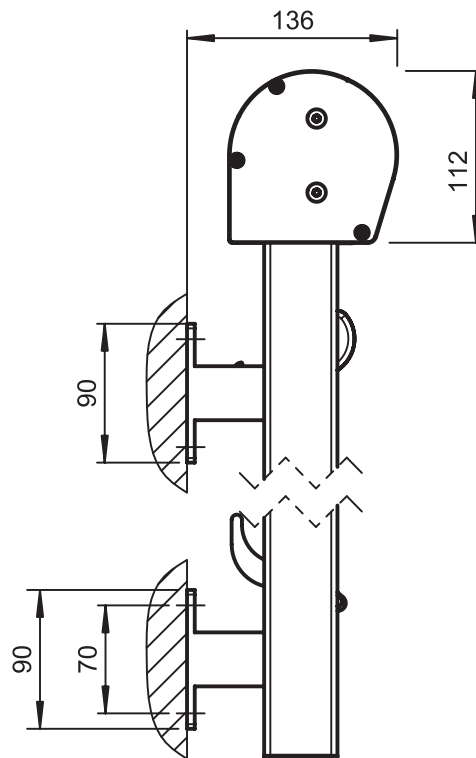
FS5610

Wall fixing



FS5610

Wall fixing



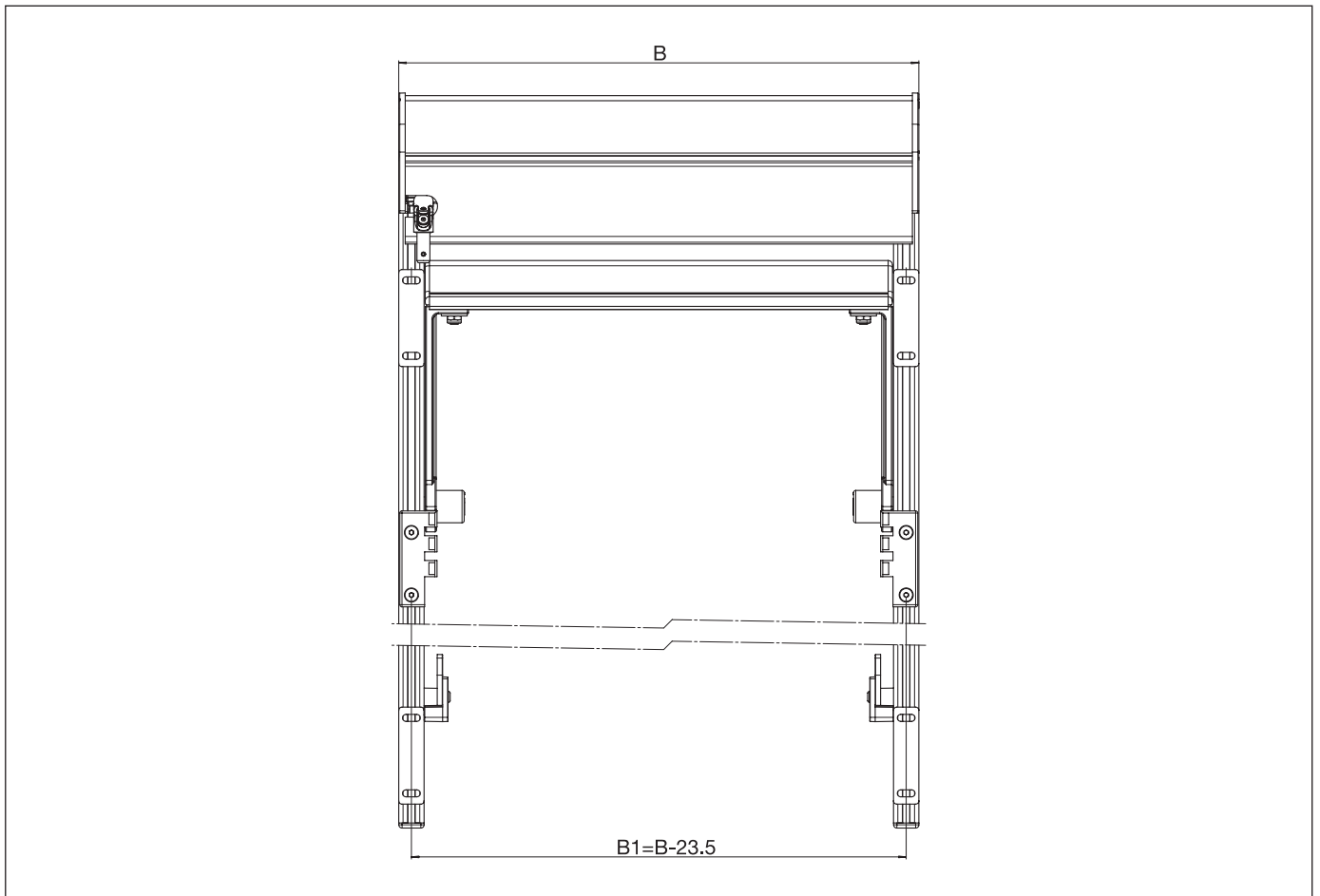


METRO-LIGHT FS5610

Projection awning up to 180° with wind latch

FS5610

Installation drawing



B = Total width